

INDOOR DETECTION

Indoor IR & Dual-tech detectors

Pet immune

Grade 3 with antimasking

RIELLO ELETTRONICA
 **AUS electronics**
ITALIAN SECURITY MANUFACTURER





	Detection range	Opening	TECHNOLOGY		
			Pet immunity	EN50131	Antimasking
JET PA	passive	15 meters - 90°	Yes 0/12/24 kg	Grade 2	-
JET DT	passive + microwave	12 meters - 90°	Yes 0/12/24 kg	Grade 2	-
JET DTM	passive + microwave	12 meters - 90°	Yes 0/12/24 kg	Grade 3	Yes

Range

AVS ELECTRONICS - Italian designer and electronic alarm producer since 1974 - presents JET, its new range of 3 passive infrared detectors with Fresnel lens: JET PA (passive version) JET DT (dualtech version with passive IR and planar microwave), JET DTM (dualtech version with passive IR, planar microwave and anti-masking).

DESIGN, SAFETY AND TECHNOLOGY All JET are digital sensors with **temperature compensation**, placed in a flat housing with modern design and a **spherical Fresnel lens**, that presents a higher quality of detection and a better **immunity to animals**. A «look down» zone eliminates the blind spot below the detector for a total protection of the environment. **Three LED lights** (blue, yellow and green) indicate the state of the detector.

The ***Quad* type build-in electric infrared sensor** divides the functional area in 4 sectors - ie **2 times more** than a conventional detector - to better distinguish environmental changes and provide a greater immunity to animals.

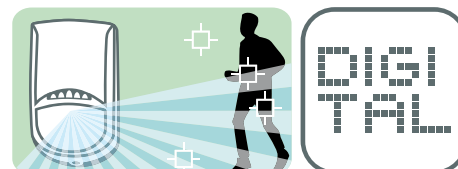
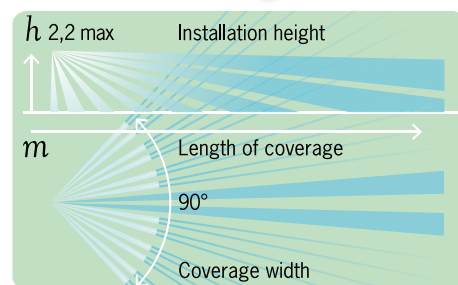
PET IMMUNE AND VERSATILITY Immunity to animals is an option it is possible to exclude or to select for **12 or 24 kg**. To install them quickly and safely, normally closed information outputs can change their **resistance values** by dip-switch according to the needs of the control panel.

Two optional wall and ceiling brackets allow to install JET in the most complex positions.

EN50131 GRADE 3 AND SECURITY All JET are EN 50131 Grade 2, except **JET DTM which is GRADE 3** thanks to its **anti-masking solution** with optical prism.

JET DT and JET DTM can be programmed in «AND» mode (infrared + microwave detection) or «AND» + «OR + « (advanced infrared or microwave detection). According to the settings and in case of failure of the «AND» mode, JET DTM can be forced in «OR +» mode for an even greater security.

MARKETS All indoor environments, **with or without animals**, from any regular domestic or commercial protection up to the highest **banking security**.



**PET WEIGHT
0/12/24 KG**



ALARM INTERNATIONAL SYSTEMS
www.ais-security.be | info@ais-security.be



AVS Electronics and AVS Electronics logo are registered marks of AVS Electronics. Other product names or company registered marks are mentioned in this document for identification purposes only and belong to concerned owners. • The manufacturer reserves the right to modify the technical and esthetical characteristics of the products at any time. • The pictures and the product descriptions are only indicative.

D 131-1.1412.1000